

# The Structure of the Effective Board

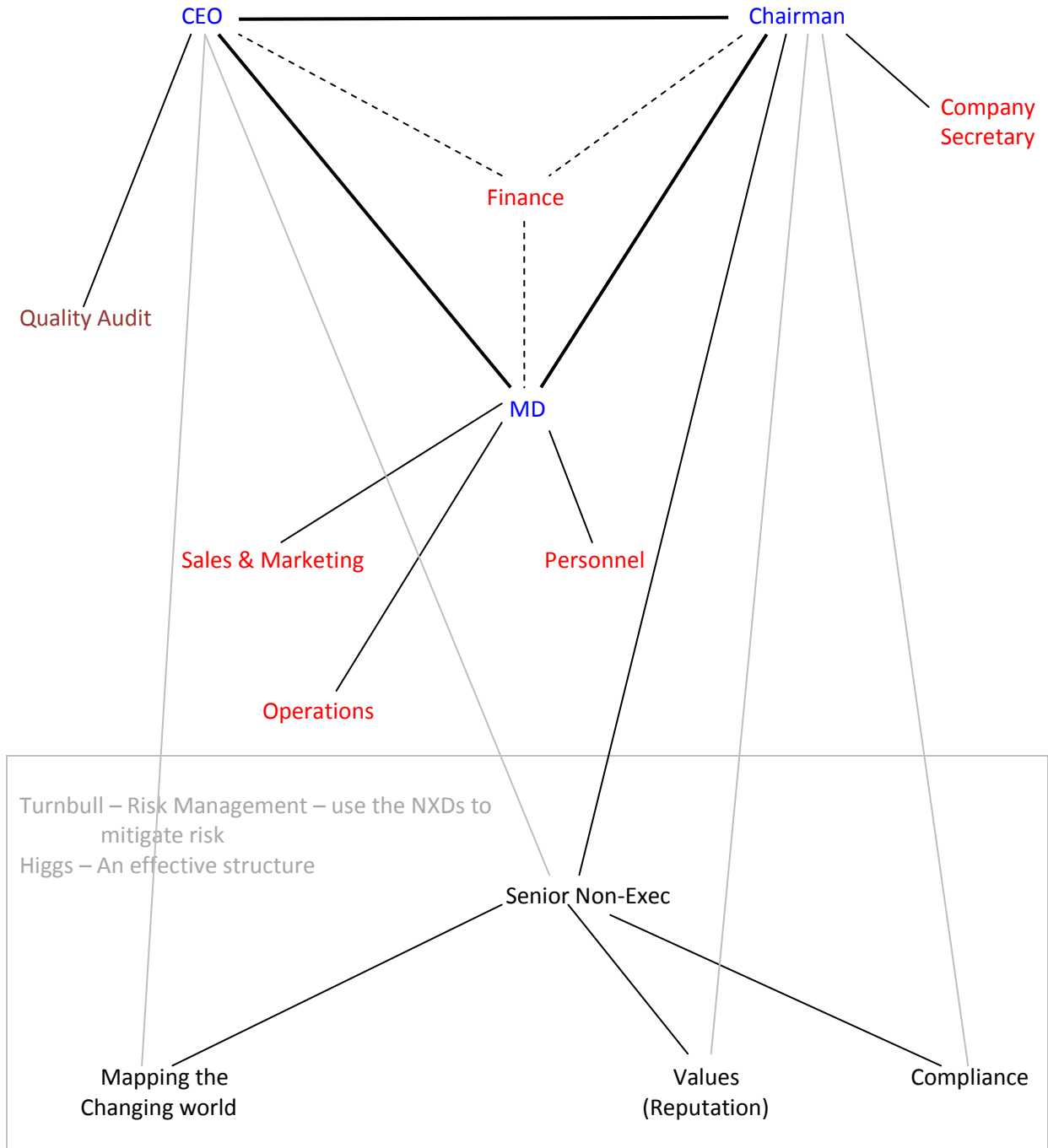
## Outline

In the strong board of directors each plays to the others' strengths and to the prevailing market conditions: the CEO seeks to take the organisation into new territory, the MD to deliver results whilst the Chairman keeps order and reports progress. The following series of articles explores these relationships at board level and maps to the note describing the 'People in the Stream'<sup>1</sup>.

## The Boardroom Links

### Market-facing

### Shareholder-facing



<sup>1</sup> See [http://fundamentally.typepad.com/blog/files/four\\_types\\_of\\_person.pdf](http://fundamentally.typepad.com/blog/files/four_types_of_person.pdf)